



COMPANY PRESENTATION

Written And Presented By:

Eric F .F. Tchoupa, Roland Nsami,
Albert Nnoko, Asi Haltine, Richard Tolo.

Contacts:

+234 817 042 59 02

+235 93 52 92 55

+235 65 46 22 81

+225 89 09 10 12

+237 671 99 50 01/ +237 697 03 67 75

+1 (713) 352 – 8992

Nigeria

Tchad

Tchad

Ivory Coast

Cameroon

Houston / USA

Contact@enies.net

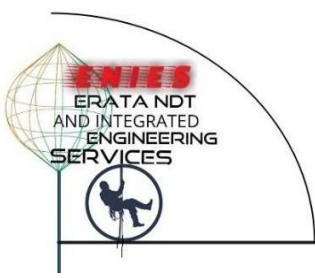
www.enies.net

2020

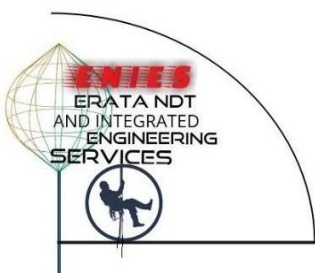


Summary

1. GENERAL PRESENTATION.....	4
1.1. Company Introduction and Description.....	4
1.2. Our Vision	4
1.3. Our Values.....	4
1.4. Our Mission.....	5
2. STRUCTURE AND OPERATIONS	5
2.1. Company Organigram	5
Company Structure.....	6
3. PRINCIPAL ACTIVITIES	6
3.1. Civil Engineering.....	7
3.2. Electricity And Instrumentation.....	7
3.3. Mechanical Engineering And Maintenance.....	8
3.4. Painting	9
3.5. Scaffolding	9
3.6. Quality Control And Quality Assurance	10
3.7. Equipment And Staffing Services (Equipment And Personnel Hire)	12
3.8. Inspection And NDT	12
3.9. ROPE ACCESS.....	16
4. QUALITY, HEALTH, SECURITY AND ENVIROMENTAL POLICY	17
4.1. QHSE Charter	17
4.2. OUR QHSE OBJECTIVE	18
4.3. OUR QHSE POLICY	19
5. OUR REFERENCES.....	22
6. PROJECT SAMPLE PICTURES	23
7. ADMINISTRATIVE DOCUMENTS	28



ENIES



1. PRESENTATION GENERAL

1.1. Introduction and Description of the Company

ERATA NDT AND INTEGRATED ENGINEERING SERVICES PLLC is an engineering multipurpose service company created in partnership by a group of five (5) young, dynamic and highly dedicated personnel, with professional engineering backgrounds, founded in the year, 2019 with Akwa as head quarter in Douala. **ENIES** was put in place with the purpose of creating a sustainable and constantly improving engineering platform, able to provide predictable and quality solutions to our clients whilst fostering lasting relationships with professionals, local councils, government agencies, contractors and suppliers. Its goal has always been to visit local and national engineering challenges with expertise and reliable solutions. Today, besides Douala(head quarter) where we dispense our services on a national scale, we have in our possession two permanent bases, one in the South West region, Limbé and the other at in the Centre region, Mbandjock and we intend opening other bases in other regions.

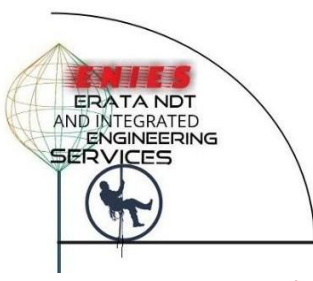
ENIES started off as a quality assurance and quality control (QA/QC) provider for micro and macro size projects : Certification and Recertification, systematic or improvised Destructive Tests (DTs) and Nondestructive Tests (NDTs), surface coating and corrosion protection in the field of control engineering in the oil, gas and energy sector. It was later extended to the inspection of oil and gas drilling tools, engineering designs, metallic constructions, mechanical assembly and industrial welding as well as painting for marine and industrial structures and architectural protective structures for various residential, commercial and industrial installations. In line with its goal of providing solutions in industrial maintenance, **ENIES** has greatly improved on its ability to be able to deliver diversified services in other engineering fields such as: agriculture, public works, mechanics, electricity/instrumentation as well as subcontracting. We pride ourselves of our incredible bespoke services designed to directly meet the needs of customers. Our biggest affirmation is our reliable and worthy team of collaborators' trust that is committed to putting our core values into practice.

1.2. OUR VISION

Our vision is to become a major and reliable contributor, offering practical engineering solutions and development for the next ten(10) years.

1.3. Our Values

- * Security.
- * Integrity (Honesty & la Transparency).
- * Affordability.
- * Quality of manufacture.
- * Innovative thinking focused on solutions.



1.4. Our Mission

We are committed to integrating young professionals, providing them with the necessary tools and offering them the opportunity to discover, develop and offer the most innovative solutions to the engineering problems and development as a whole.

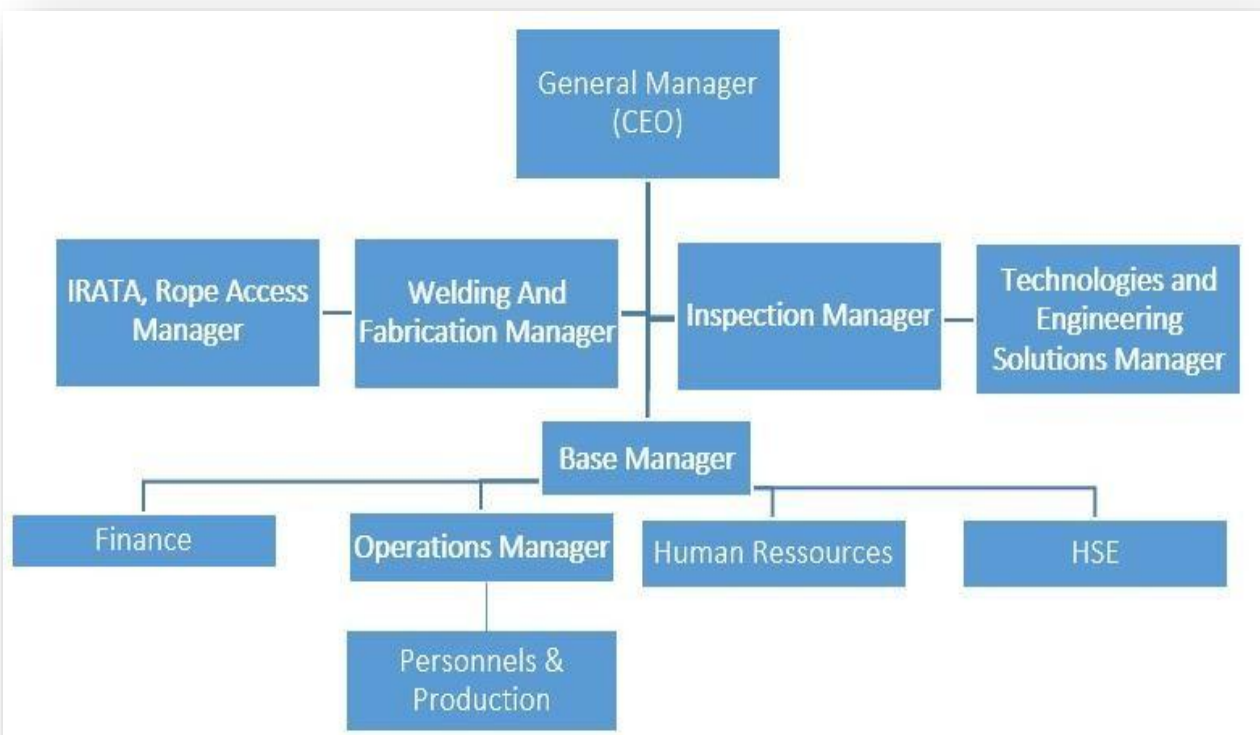
With an ethical mindset, our operations are based on moral righteousness and fairness in business. We are committed to providing our people with the best opportunities to attain their full potential and our enthusiasm is supported by an unquenchable passion for excellence. In a rapidly changing business milieu, we are made to understand that is essential and constant and that innovation is critical to a business survival and that a business entity cannot thrive without creating opportunities and prosperity for others. As a result, we are committed to building mutually beneficial partnership whilst seeking solutions to subsequent and everyday problems.

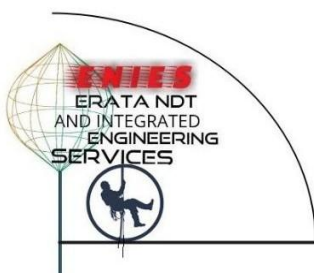
In so doing, we are committed to providing first class quality services as quickly as possible and to put customer's value first place. We will also continue to build and maintain a reliable and professional relationships with our customers, meet and overcome all challenges and value innovation and resourcefulness.

By nurturing young talent and improving their maturity via industry experience, we ensure our commitment to our slogan; **Your satisfaction is our objective.**

2. ORGANIGRAM

2.1. Organigram





1)

Company Name: *ERATA NDT AND INTEGRATED ENGINEERING SERVICES PLLC*

2)

Name of Manager: **ERIC F.F. TCHOUPA**

3)

Company Status: ROPE ACCESS, INSPECTION AND NDT, FABRICATION AND WELDING, DIVING, CONCEPTION AND ENGINEERING, INDUSTRIAL MAINTENANCE, SERVICES, GENERAL TRADE, IMPORT / EXPORT, SCAFFOLDING, PAINTING.

4)

Base : DOUALA

5)

Mobile: +237 697036775 Eric F.F. TCHOUPA (MANAGER), +237 675847185 Roland NSAMI (CO MANAGER), +237 671995001 ALBERT NJANG NNOKO (CO MANAGER), +12407146295 ASI HALTINE (CO MANAGER), 695248001 RICHARD TOLO (CO MANAGER).

6)

e-mail: contact@enies.net

3. MAIN ACTIVITIES

Field of Operation

As a multipurpose engineering service company, we offer services in the following areas:

- **ROPE ACCESS (IRATA SPECIALIST CERTIFIED)**
- **INSPECTION AND NDT**
- **MECHANICAL ENGINEERING AND CONSTRUCTION (FABRICATION AND 6G WELDING).**
- **CONCEPTION AND ENGINEERING**
- **INDUSTRIAL MAINTENANCE, SHIPS & MARITIME MAINTENANCE, INSPECTION**
- **DIVING**
- **SCAFFOLDING**
- **PAINTING**
- **INDUSTRIAL CLEANING**

- CIVIL ENGINEERING, ELECTRICITY AND INSTRUMENTATION
- Provision of Services (Personnel and Equipment hire)

3.1. Civil Engineering.

This department is staffed with highly qualified personnel(engineers, technicians, surveyors etc.) and all the necessary equipment needed to carry out the project from conception to completion via the construction and often on a custom basis.



3.2. Electricity and Instrumentation

Nowadays, with the consistent utmost technological advancement observed in the industry, most operations are becoming more and more automated. Electrical and electronic devices and instruments aid us overcome these challenges.

We have a stand by reliable electrical engineering team present and available to manage these facilities and program them to run accordingly.



3.3. Mechanical Engineering and Metallic Construction

This department manages all aspects of mechanical industrial operations, **Fabrication and Construction** (Sizing, Analysis, implementation/production), **Conception (AutoCAD and SolidWorks)** including the metallurgy, **Welding (ABS 6G)**, **Piping and Braziers**, installation of various equipment and maintenance work. We operations are extensive, both **onshore like offshore**.

Ships Maintenance and Inspection:

Draft Survey, Hull Machinery (Full),

Deck Equipment's Inspection and Check list,

Full Condition Draught,

On and Off Hire Bunker.



3.4. Painting

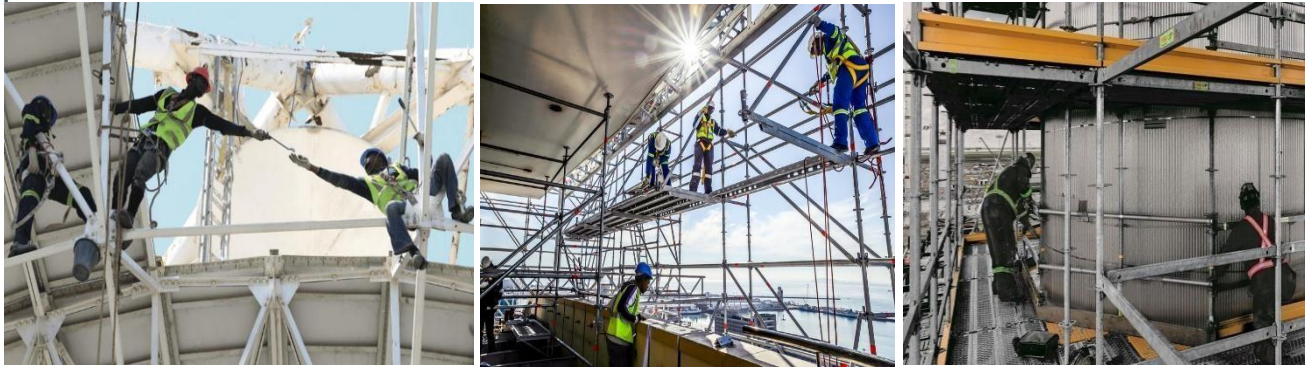
Equipped with well experienced and certified engineers, inspectors and technicians who have all the equipment needed to carry out quality operations both onshore and offshore. Our services are as follows:

- Marine and Protective coating (Anticorrosive industrial paint)
- Architectural coating (Painting of buildings)
- Special Surface treatment
- Treatment of industrial tanks and floors
- Soil treatment for agro-food processing centers
- Quality control inspection of coatings (painting)



3.5. Scaffolding

Many industrial operations onshore like offshore require access to execute works at height. For feasibility, accessibility and safety of these operations, depending on the request/option of the client(s) we have a team of skilled, experience and certified rope access and scaffolders ready for action. They are young, well trained and equipped for the job.



3.6. Quality Assurance and Quality control

At ENIES, **customer's satisfaction is our priority**, hence the creation of our **slogan**.

We comprehend the significance of respecting work specifications to ensure the quality of the work we do for our customers, as well as safety at work. To make this feasible, we have certified, well trained, experienced and quality inspectors in all our field of activity; Rope access, Inspection, NDT, DT, Diving, Civil Engineering, Electrical / Instrumentation, Mechanical work, Painting and Scaffolding. They carry out quality control of our projects and also available to carry out third-party quality checks when we are consulted upon.

Our coating department(painting) is equipped with professional inspectors certified by the following international bodies : **IRATA, ASNT, CORRODERE, NACE and SSPC**.

In the mechanical engineering and metal construction department, quality control monitors the pressure testing of various equipment, as well as the control of lifting, handling and climbing equipment. Besides , NDT services are offered in the following NDE methods;

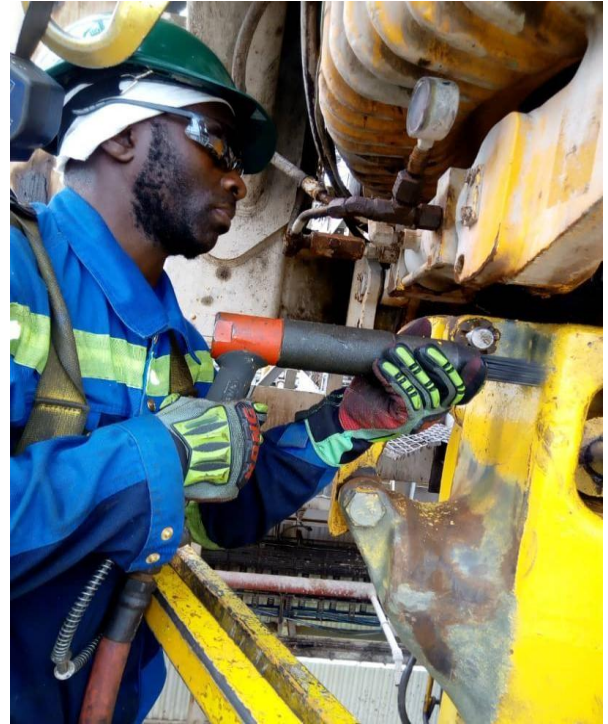
- Radiographic Testing and Interpretation(RT)
- Ultrasonic Testing –flaw Detection(UT)
- Ultrasonic Testing –Thickness Gauging(UT)
- Visual Testing(VT)
- Magnetic Particle Testing(MT)
- Magnetic Flux Leakage(MFL)
- Fibroscopy or Boroscopy
- Eddy Current Test(ET)
- Proof Testing / Load Testing
- Pressure Testing
- Liquid Penetrant Testing(LPT)... etc.



Our NDE staff are trained, qualified and certified to ASNT, PCN level I & II NS2 level II. All level I perform specific calibrations, NDEs, and evaluations but under the diligent supervision of a level II or III.

A level II technician is qualified to set up and calibrate equipment and to interpret and evaluate results with respect to applicable codes, standards and specifications.

WE are equally equipped with an QHSE department reinforced with NEBOSH certified professionals.



3.7. EQUIPMENT AND STAFFING SERVICES (Personnel and Equipment rentals)

Basic elements such as: Our visibility, our service and our commercial loyalty have gone way to long to open wealth of professional contacts and allow us to acquire many equipment. We found it generally helpful to link businesses and professionals, and vice versa, as well as renting new equipment to those in need when it was accessed. At one point these needs become profound and coherent and we turned them into service. To date, customers' feed back has led us to believe our equipment and staffing services are important, reliable and valuable. There fore, we are committed to continually improving this department.

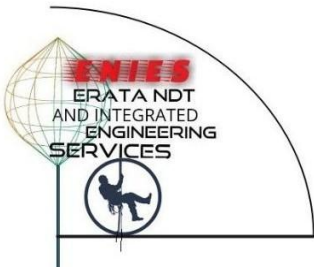
3.8. Inspection and NDT

For the oil and gas industries, food processing industries and or other industrial related sectors calling in for the need of mechanical installation, we help to ensure reliability and safety of your produce, equipment or installations with our world-class services in non-destructive testing, destructive testing, material testing and quality welding.



We understand the processes involved throughout the product cycle-from conception via design to manufacturing and from operations to maintenance and taken into account the frequent need for fast turnaround times. Insurance services can support production processes, quality control and regulatory compliance. As well as new constructions, pipelines, plant maintenance and scheduled shutdown inspection.

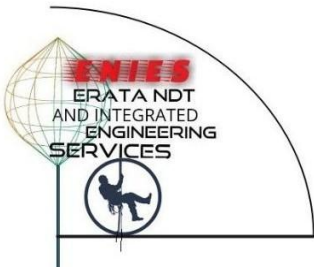
Our extensive expertise and knowledge of non-destructive testing and materials allow us to select the right techniques and procedures to detect defect and irregularities in/on your products, equipment, production, plant or factory assets and you provide the data needed to help you make rational and sound decisions.



ENIES can help you avoid the risk of catastrophic and fatal consequences and financial losses with the detection of problems before they cause damage, malfunctions or failure in services.



Besides our services in non-destructive testing, destructive testing and material testing, we equally provide complete and quality welding services to help meet your needs in welding related jobs, comply with international and national codes and standards and penetrate new markets. With our training and welder qualifications, ENIES operates in various industrial sectors, in particular oil and gas field, food processing, renewable energy, automotive rail, general engineering, manufacturing and construction.



Wherever your company is located and regardless of the sector, our expertise allow us to support you technically with our full range of NDT services:

- Material and Pressure tank tests inspection
- Special NDT services
- Welding Services
- Consultancy

The advantages of choosing ENIES for its NDT services, material testing and welding. By associating with MIES we pledge to bring real value to your business by protecting your brand, your reputation and by ensuring the safety and integrity of your produce, equipment and facilities. We help you save time and money by avoiding the cost and loss of revenue related to defects or failures of products during or after forging or processing of equipment and goods all done with less possible disruption to your processes and schedule of production. We run a well equipped facility and highly qualified and experienced NDT personnel with required qualifications in the following sector:

ASNT: For all NDT services, from lifting equipment, climbing inspection, material inspection, drill pipe and down hole tools inspection and welded joints inspection

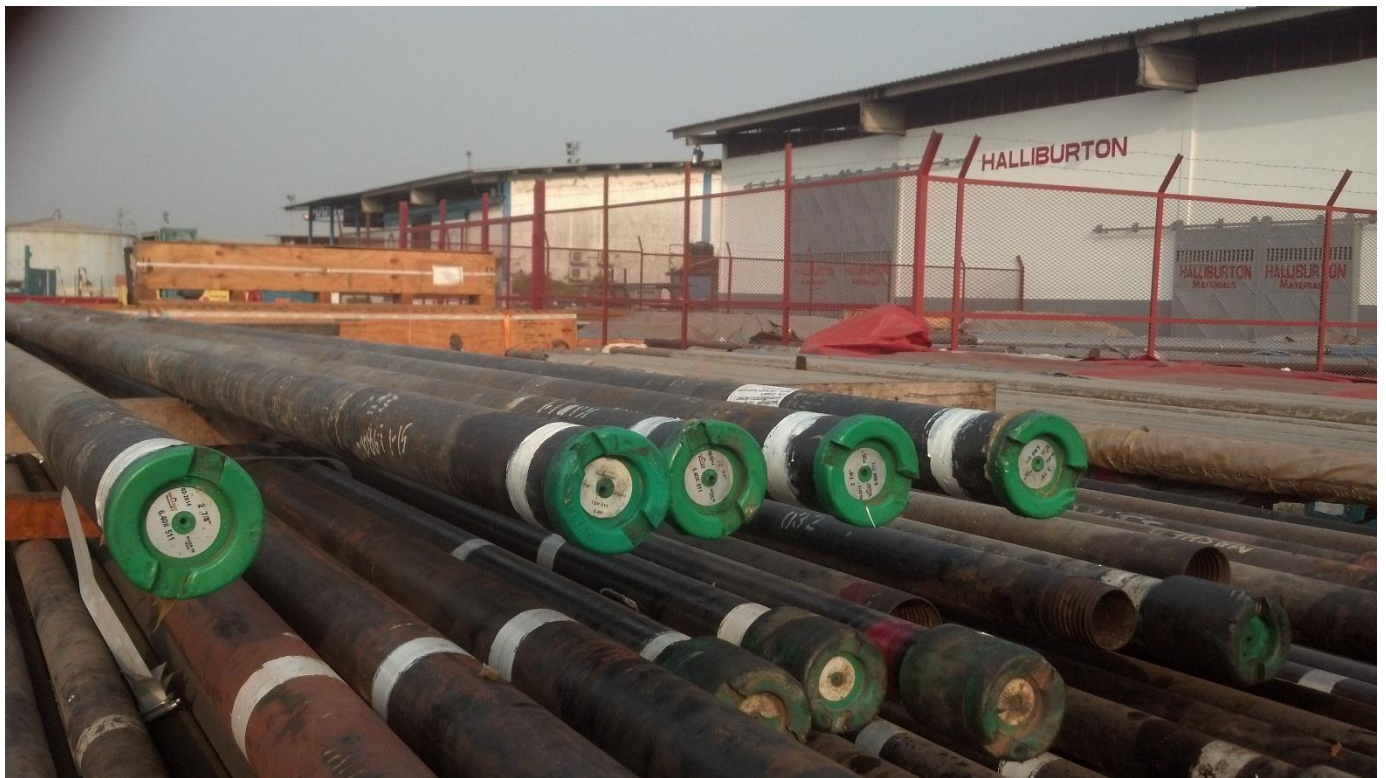
ASME 1X-2007: 6G welding approval

CSWIP: for welding inspections, supervisors and instructors/examiner.



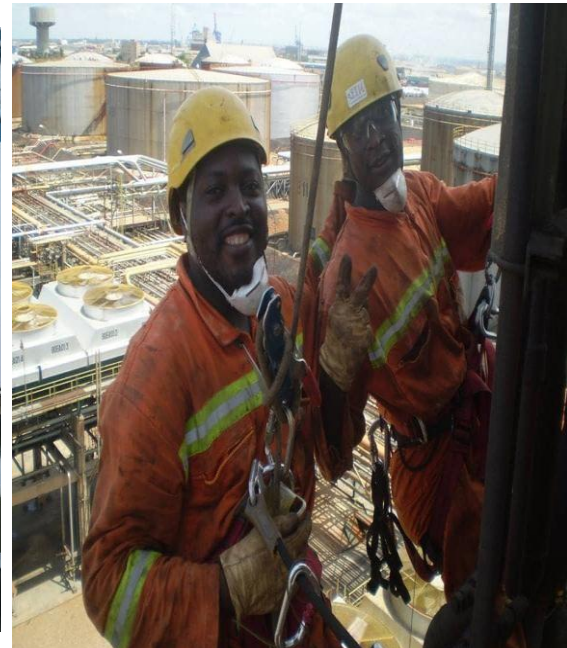
Accreditations and approvals of the company

Each accreditation has and is site-specific. Our total quality assurance solutions cover a wide range of industries, including rail, public, transportation, manufacturing, precision engineering, power generation and many others.



3-9. ROPE ACCESS

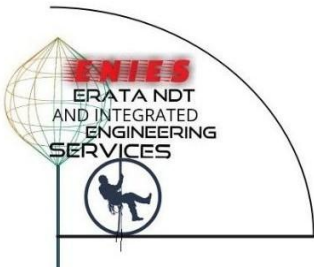
With experienced, certified and qualified level 1, 2 & 3 IRATA specialists, it is the flagship department of **ENIES** prompt to carrying out works at height offshore and onshore, on oil rigs, drill ships or at any other industrial sites.



The rope access squad work at specifically great height in a very safe and professional manner:

- NDT
- Welding
- Surface cleaning and sandblasting
- Painting
- Constructions





ENIES has one of the best rope access team. From the sub region with countless benefits and achievements.



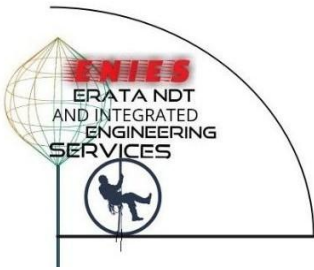
4. QUALITY POLICY, HEALTH, SAFETY AND ENVIRONMENT

4.1 QHSE STATEMENT

ENIES committed to providing a safe and sound working environment for all its employees, subcontractors and others by mitigating all risk and health hazards via the effective implementation of these health and safety policy . Everyone working for ENIES takes it to himself or herself as the sole responsibility for managing health and safety in all aspects of business.

Our aspirations are simply stated thus:

“No accidents, No harm to people, and No damage to the environment.”



4.2 QHSE OBJECTIVES

ENIES will have has sole focus to:

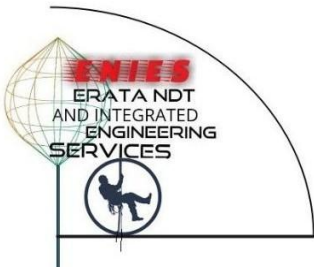
- Control and systematically managed its operations to continuously reduce risks and improve performances.
- Consult, observe, listen and respond openly and with all sincerity to employees, contractors, customers and stakeholders to ensure that feedback (comments) from all employees and contractors is/are where reasonably applicable included in decision making processes affecting health and workplace safety.
- Identify, assess and formally mitigate health and safety risks and risks based on the nature and extent of the risks of ENIES.
- Ensure that its leaders, in the advents of any risks related to safety take immediate and rational decisions when identified, analyzed and reported.
- Work in close collaboration with partners, suppliers, competitors and regulators to carry research on recommended practices.
- To comply with legislation, standards, codes of practice of ENIES and all other health and safety requirements that the organization subscribes to and ensures that all managers and staffs receive information, instructions and trainings to fully comply with these requirement.
- Ensuring that all managers and staff receive information, instruction and training regarding ENIES health and safety policies and procedures and that all interested parties have access to health and safety policies.
- Develop and implement training programs to enhance employees' health and safety skills and knowledge and disseminate health and safety information to all employees, contractors and others at site of work.
- Strive to continually improve health and safety performance by setting clear and measurable goals and acknowledging those who make positive and constructive contributions to progress.
- Provide employees with appropriate equipment and facilities to perform their duties in a professional and safe manner.

Ensure that the health and safety policy remains relevant and appropriate for ENIES while requiring periodic review in accordance with the management review procedure.

ENIES employees and contractors:

- Are required to adopt safe work practices, to comply with all policies and health and safety procedures and to report all hazards and unsafe work practices.
- Have the responsibility and authority to stop work in case of doubt about safety or operational risks..

ENIES prides itself to considering the health and safety of its employees and clients as its number one priority. Thus, we develop and implement security policies that will bind us as well as our customers and the environment, positively by maintaining a trouble free working milieu.



We carry out all activities given priority to health, safety and environment and we strive to the maximum of our ability to minimize the risks associated with our business. Establish reliable procedures and practices in all our operations and ensure that your work environment is eventful.

Promote freedom and participation in health, safety and environment.

Provide information that allows staffs to work in a safe and healthy manner.

Respect all stipulated rules and regulations.

ENIES has put in place a structural system to manage health, safety and environment. This system ensures continuous improvement of performance and compliance with rules and regulations. This system:

- ❑ Reports staff's health performance safety and environment.
- ❑ Contract staff recruitment base on minimum requirements of contract policy applied health, safety and environment.
- ❑ Requires all employees and contract employees to be fully aware that they are not only allowed to stop work that it is imminently hazardous but have as responsibility to do such.

4.3 HSE POLICY

OVERVIEW

At ENIES, an essential element to the success of our various projects repose on the health and safety of all those who work for or on our behalf, as well as our clients and all stakeholders. Therefore, to ensure a trouble-free work environment, we have implemented this policy to guide us, our clients and other parties in which we are in close collaboration, for the protection of life insurance assets and the environment.

As a result this information is intended to provide employees and clients with guidance the key areas they need to know when performing a given task.

Work Permit

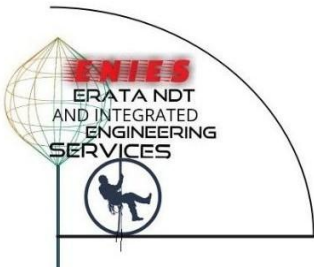
It is the key to starting a given operation. Our employees are sensitized on what to do and how to do it in order to obtain a work permit

Tool Box Meetings

All the necessary equipment and or tool box needed to execute the job must be made available at the site of work. They must be in shape and functional prior to starting any job. This makes it easy to help identify and eliminate or mitigate any potential hazard.

NB: Safety meetings are often conducted in a language common and understood by all members of the crew otherwise translated where reasonably applicable.

Anti-drug and anti-alcohol policy



No worker with no exemption shall be permitted to carry out any operation on our premises or project(s) under the influence of drugs or alcohol. **First aid**

All injuries or near misses must be reported as soon as possible to our First Aid Officer available.

Personal Protective Equipment(PPE)

The right PPE must be worn and used for the appropriate job at the right time in the right place.

Material Safety Data Sheet (MSDS)

Material Safety Data Sheet must be read and understood perfectly by the user or operator or team members prior to product usage.

Safety Signs, Symbols and Barricades

Eligible and appropriate safety signs, symbols and barricades shall be used in the designated areas.

Job Safety Analysis (JSA)

To mitigate the stakes of potential hazards, crew members shall provide a JSA that will aid to identify potential hazards and breaking down the work into basic steps for safety reasons

Last-Minutes Risk Assessment

Prior to commencing any operation on site, the HSE officer and the work supervisor shall conduct a last-minute risk assessment.

Vehicles

Diurnally, company vehicles shall under go car inspections before being put to service and only competent and authorized drivers shall be permitted . The driver shall ensure seat belts are worn by all passengers onboard without exceptions and no answering emitting calls while driving. All vehicle incidents must be reported to department head.

Confined Space Entry

Confined space shall not be assessed until, appropriately vented, tested and found safe and the appropriate entry permit is been made available, all permitted with the concession of equipment supervisor.

Fire fighting And Fire control

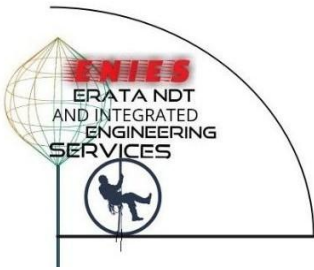
Certified fire extinguishers must be used during all hot work operations. All ENIES employees shall have basic fire fighting skills.

Scaffolding and Ladders

Scaffolding assembly and dismantling shall be performed by certified and authorized persons only. As a rule of thumb, the three points contact to prevent trips shall be applied by all personnel.

Cleaning

Our site waste shall be taken care off accordingly.



Environmental Waste Management and Segregation

Waste collected during housekeeping or otherwise shall be differentiated from hazardous waste; solid waste from liquid. Waste bins shall be made available for the different waste type. Hazardous waste shall be sent to the waste management unit for proper handling and treatment.

After Working Hours

It is the prime duty of every worker to make sure they return home safely so as to spend time with their families, love ones. Workers shall avoid overexertion and remember to take enough rest in order to resume duty in time, good conditions and with a fresh mind.

Approved by management, Oct. 2019

4.3.1 Staff Security

The company is directly concern and responsible for the safety of its staffs. As a result it has developed a well-defined security plan which include the following. All staffs in our organization are declared on a social assistance.

- In the employment contract, the internal safety rules of the work place are specified in the employment contract and employees are obliged to observe them.
- All personnel working on site or any job related project for ENIES must put on the appropriate PPE
- Basic safety training courses are organized periodically for staff.
- Safety meetings are held daily before work begins.
- Project manager or site manager shall ensure the safety of staffs on site.
- Every crew shall have a leader and the latter shall be responsible for the welfare of his crew.

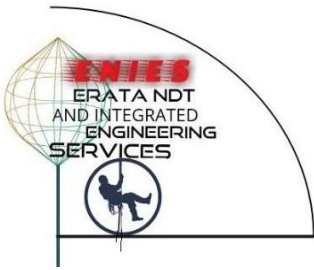
4.3.2 Procedure in the case of incident or accident

- 5.0 The affected or injured individual at the time of service will be immediately evacuated from site by a rescue team or colleagues.
- 6.0 • He or she will be administered first aid treatment.
- 7.0 • Simultaneously, the team leader or site manager shall have as responsibility to communicate the incident/accident to the supervisor.
- 8.0 • The injured person shall be evacuated to the nearest approved medical center based on his condition by the owner and or the company if it provides medical care.
- 9.0 • The company prepares an audit report to verify compliance with these instructions and to raise awareness.

9.3.1 Personal Hygiene

Personal hygiene is a matter of health and cleanliness. This calls for the need of concern and the company must provide and equip this department:

Health and Safety facilities

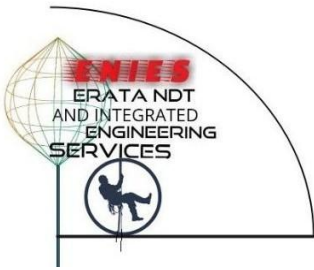


- A catering service shall be put in place and shall be verified and controlled.
- Staffs dwelling place shall be well equipped, with good ventilation, lighting and sun penetration system.

- Employee awareness is the responsibility of team leaders and project manager and or site manager.

5. OUR REFERENCES

Contractors	Object of the contract
GAZ DU CAMEROUN	Derrick Inspection of the Rig (Eddy Current)
GAZ DU CAMEROUN	NDT inspection and certification of both low and high pressure gazelines (phase 1)
COTCO/EXXON MOBIL	Rope Access, Inspection, Quality control and quality assurance (corrosion) on KK1 project (At Kribi), FSO.
CHEVRON	Rope Access, Inspection, Quality control and quality assurance on chevron site at Agbami (Nigeria)
NORVE/BORR DRILLING	NDT, Inspection, Rope Access, Quality control and quality assurance on Rig
SKY SKIPPER	Industrial Painting And Buildings Maintenance
GLENCORE CHAD BRANCH	Lifting Gear Inspection
GWDC	Witnessing certification and recertification of PSV's
BAKER HUGHES CHAD BRANCH	BHA INSPECTION (BOTTOM HOLE ASSEMBLY) On Rig.
SONARA	Inspection and Corrosion control
BORR DRILLING, SCHLUMBERGER CAMEROON	BHA INSPECTION (BOTTOM HOLE ASSEMBLY)
COSL SEEKER, SIMS INTERNATIONAL, PARAGON	Lifting Gear Inspection

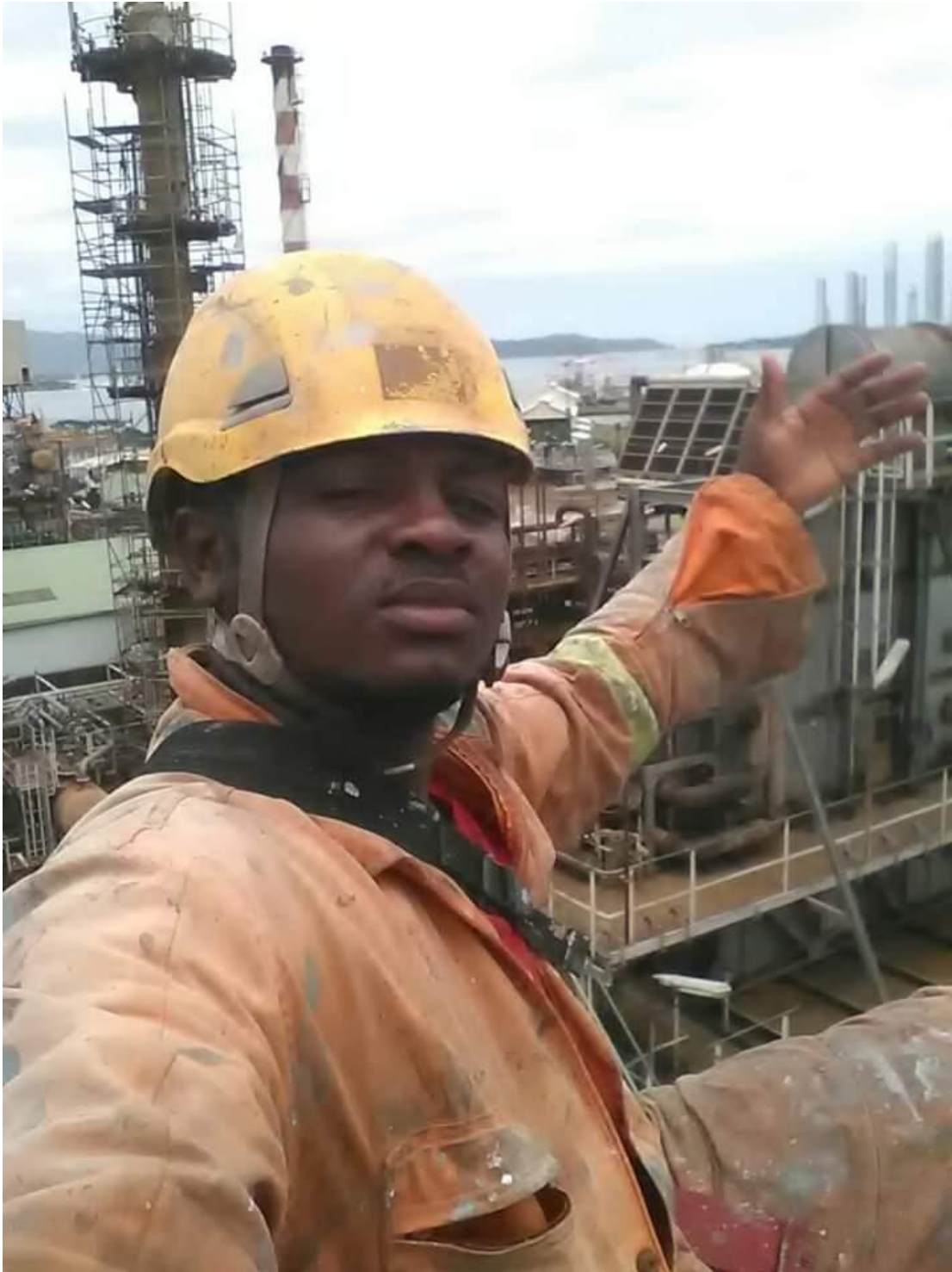


6.

Sample Pictures of some executed projects



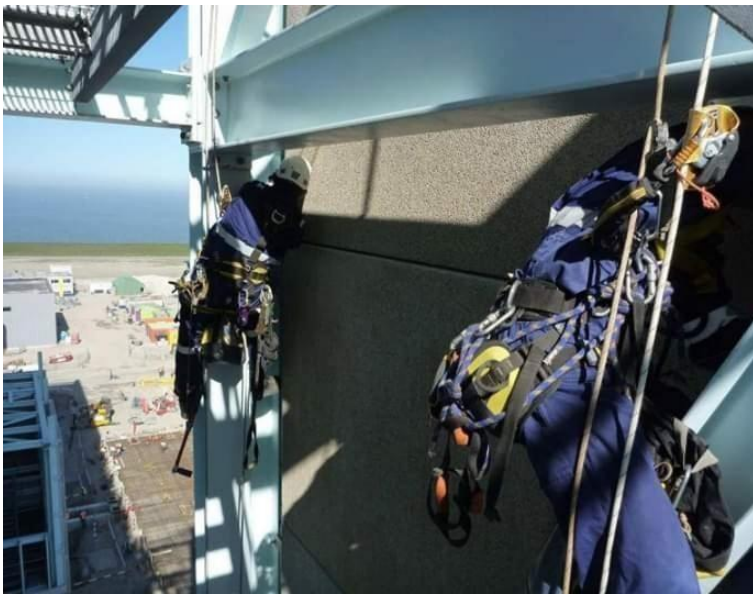
SONARA - CORROSION CONTROL ON THE TOUCH





BORR DRILLING, SCHLUMBERGER CAMEROON – BHA INSPECTION









7- DOCUMENTS ADMINISTRATIFS

*Extrait des Minutes du Greffe
du Tribunal de Première Instance de
DOUALA-NDOKOTI*

**DECLARATION
DE CONSTITUTION DE PERSONNE MORALE**

RENSEIGNEMENTS RELATIFS A LA PERSONNE MORALE

A.P Porto Novo 23/24 juin 1999

Dénomination Sociale : ERATA NDT AND INTEGRATED ENGINEERING SERVICES

Nom Commercial : en abrégé « ENIES »

Adresse du Siège : DOUALA-CAMEROUN

Adresse de l'établissement créé : DOUALA-CAMEROUN

Forme juridique : société à responsabilité limitée (SARL). N° RCCM : RC/DLN/2019/B/1877

Capital Social : 250.000 FCFA **Dont en numéraires :** 250.000 FCFA **Dont en nature :** 0 FCFA

Durée : 99 années

RENSEIGNEMENTS RELATIFS A L'ACTIVITE

ACTIVITES : ACTIVITE PRINCIPALE (préciser) : INSPECTION, ROPE ACCESS, DIVING AND UNDERWATER INSPECTION AND SUPPLY OF EQUIPMENTS AND TECHNICIANS, WELDING (INDUSTRIAL AND UNDER WATER WELDING), INDUSTRIAL MAINTENANCE, PAINTING AND SAND BLASTING, SCAFFOLDING, CONCEPTION AND DESIGN OFFICE, CONSTRUCTION AND CIVIL ENGINEERING, TO CARRY ON THE BUSINESS AS EXHIBITIONS OF VARIOUS GOODS, SERVICES AND MERCHANDISE AND TO UNDERTAKE THE NECESSARY ACTIVITIES TO PROMOTE SALES OF GOODS, SERVICES AND MERCHANDISE MANUFACTURED DEALT WITH PROVIDED BY THE COMPANY ET GENELEMENT TOUTES OPERATIONS FINANCIERES, COMMERCIALES, INDUSTRIELLES, MOBILIERES ET IMMOBILIERES POUVANT SE RATTACHER DIRECTEMENT OU INDIRECTEMENT A L'OBJET SOCIAL OU A TOUTS OBJETS SIMILAIRES OU CONNEXES

Date de début : Dès immatriculation au RCCM **Nombre de salariés prévu :** -----

Principal établissement.
Adresse : DOUALA-CAMEROUN

Etablissement secondaire : (autre que celui créé) Non

RENSEIGNEMENTS RELATIFS AUX ASSOCIES

La totalité des renseignements relatifs à ces associés doit impérativement figurer sur le formulaire complémentaire MO Bis annexé

RESUME DES INFORMATIONS

NOMS	PRENOMS	DATE ET LIEU DE NAISSANCE	ADRESSE
NSAMI	Roland	14 Mai 1981 à Yaoundé	Douala-Cameroun
FEUDJIO TCHOUPA	Eric François	30 Septembre 1987 à DIZANGUE	Douala-Cameroun
NJANG	Albert NNOKO	16 Décembre 1988 à KUMBA	Douala-Cameroun
ASI	Haltine	22 Novembre 1990 à Douala	Douala-Cameroun
TOLO BADE	Richard	27 Novembre 1991 à Bertoua	Douala-Cameroun

RENSEIGNEMENTS RELATIFS AUX DIRIGEANTS

Concerner les gérants, administrateurs ou associés ayant le pouvoir d'engager la personne morale
Les renseignements ne pouvant figurer ci-dessous doivent IMPERATIVEMENT être reportés sur le formulaire complémentaire MO Bis annexé

NOMS	PRENOMS	DATE ET LIEU DE NAISSANCE	ADRESSE	FONCTION
FEUDJIO TCHOUPA	Eric François	30 Septembre 1987 à DIZANGUE	Douala-Cameroun	Gérant

Commissaires aux comptes

NOMS	PRENOMS	DATE ET LIEU DE NAISSANCE	ADRESSE	FONCTION

Le Soussigné (préciser si mandataire), FEUDJIO TCHOUPA Eric François demande à ce que la présente constitue **DEMANDE D'IMMATRICULATION AU RCCM.**

La conformité de la déclaration avec les pièces justificatives produites en application de l'Acte Uniforme de l'OHADA sur le Droit Commercial Général a été vérifiée par le Greffier en Chef soussigné qui a procédé à l'inscription le **23 OCT 2019** sous le **NUMERO RC/DLN/2019/B/1999**

LE GREFFIER EN CHEF
Le Chef de Section RCCM

M. Boufano Didja
Administrateur des Greffes

Fait à Douala le 23 Octobre 2019
signature

REPUBLICQUE DU CAMEROUN
REPUBLIC OF CAMEROON
TRIBUNAL DE PREMIERE INSTANCE
DOUALA-NDOKOTI
MINISTRE DE LA JUSTICE

N° CONTRIBUTUABLE: **MT01914245838K** 6488
Taxpayer's N°

CENTRE DES IMPOTS: **COUACOUALA-13**
Tax Center

NOM / RAISON SOC: **ERATA NDT AND INTEGRATED ENGINEERING**
Surname / Business name

PRENOM ou SIGLE: **SERVICES "ENIES" SARL**
First name / Acronym

SEXE: **NATIONALITE:**
Sex **Nationality**

DATE (1): **23/10/2019** **A / ad:** **COUACOUALA**

Numero de série: **0010037**
Serial Number

N° CNI ou RC: **BLN/2019/B/1877**
Id N° Business Register

REGIME FISCAL: **SIMPLIFIÉ**
Tax schedules

ACTIVITE PRINCIPALE: **INSPECTION-INDUST MAINTEN-ENGINEERING**
Main activity

ADRESSE: **COUACOUALA**
Address

Signature: **Ignatius A. Beke**
Contrôleur Principal des Revenus (Impôts)

10/2019 02-20-19
 Date naissance personnes physiques
 Date constitution personnes morales